

# Central Yolo Bypass Area Topography

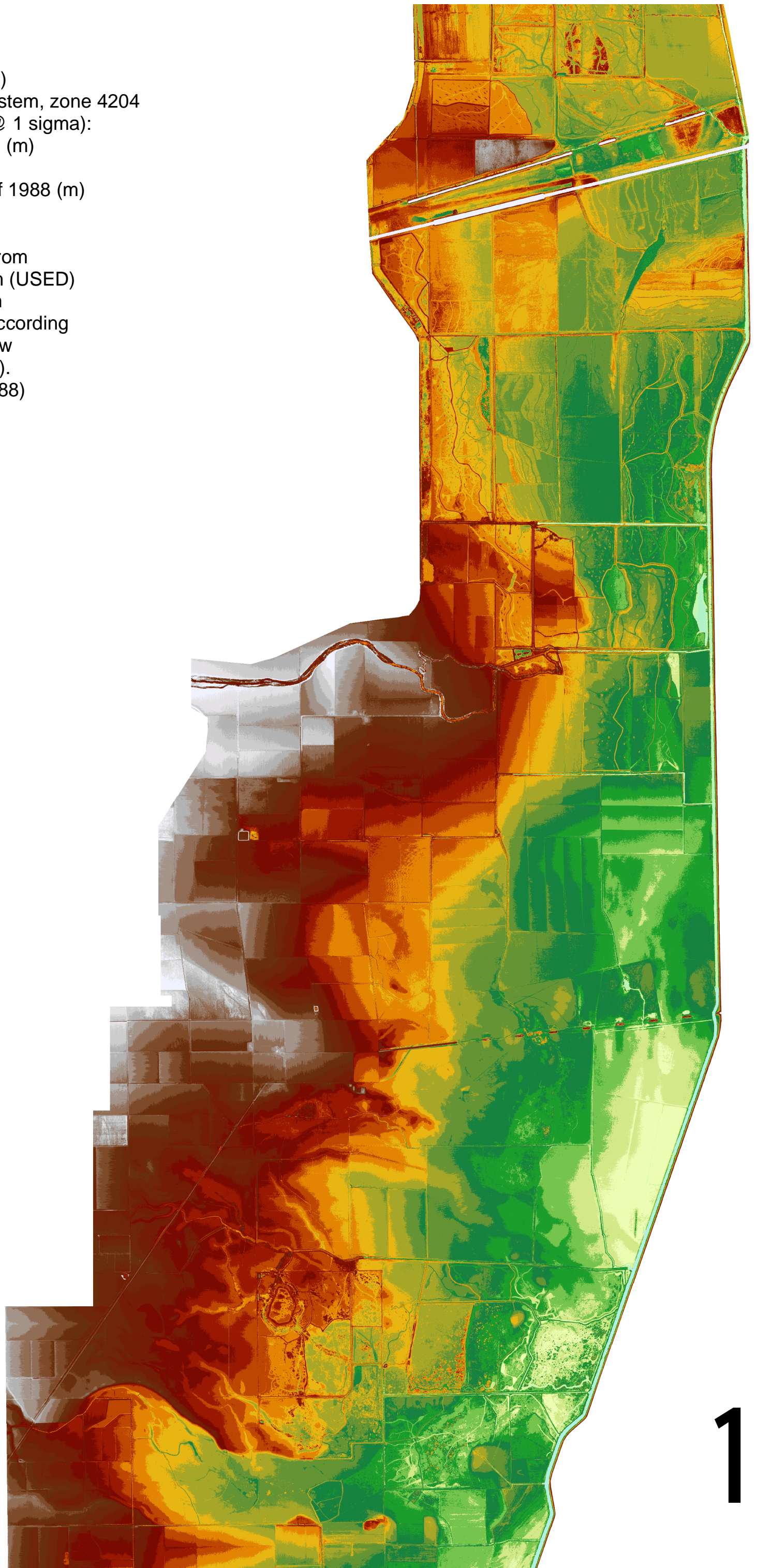
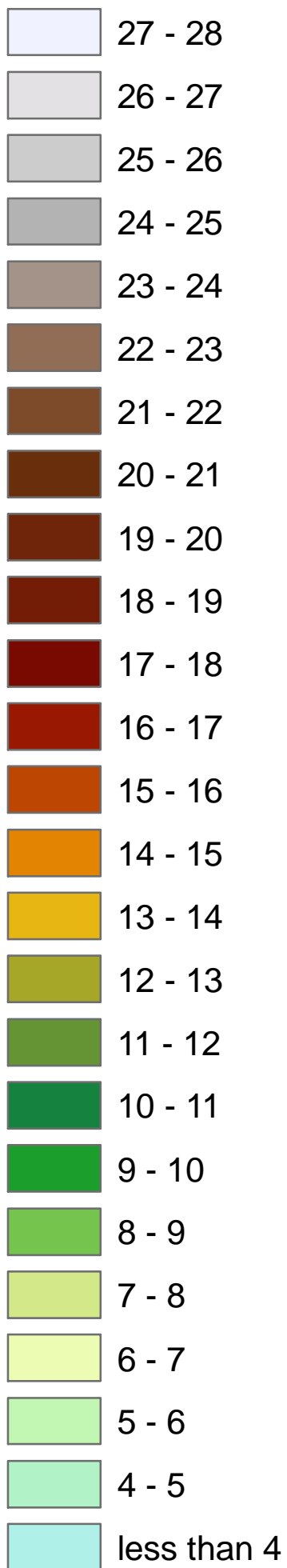
2005 LIDAR  
2m Digital Elevation Model (DEM)  
GCS: State Plane Coordinate System, zone 4204  
HORIZONTAL (1 foot accuracy @ 1 sigma):  
D\_North\_American\_1983\_HARN (m)  
VERTICAL (unstated accuracy):  
North American Vertical Datum of 1988 (m)  
(0.01 m altitude resolution)

At Fremont Weir, the correction from  
United States Engineering Datum (USED)  
to North American Vertical Datum  
of 1988 (NAVD88) is -0.69 feet according  
to Corpscon. CDEC records show  
Fremont Weir is 33.5 feet (USED).  
Fremont Weir is 32.8 feet (NAVD88)

## Legend

### Yolo Bypass DEM

#### Elevation Range (feet)



1